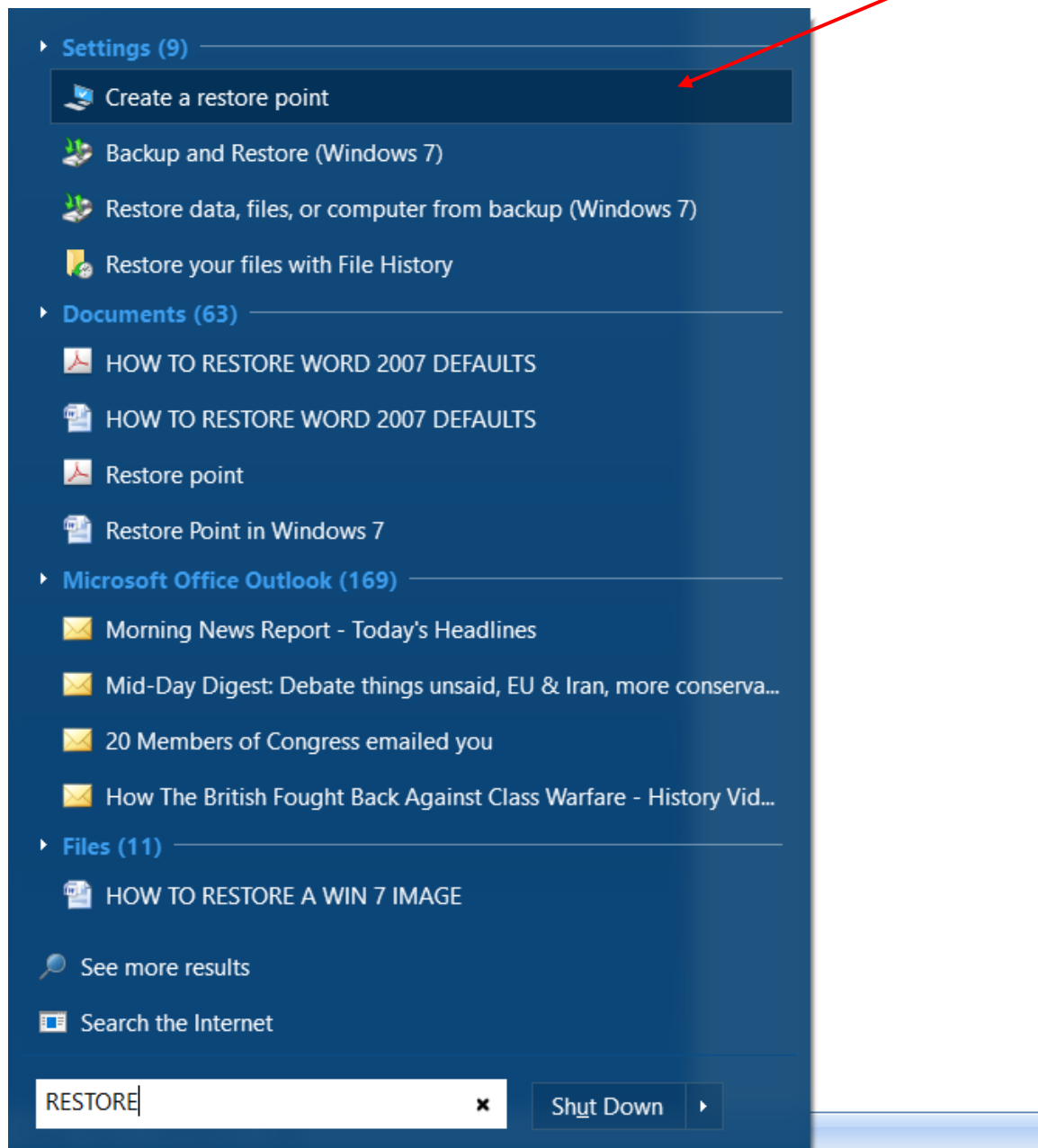
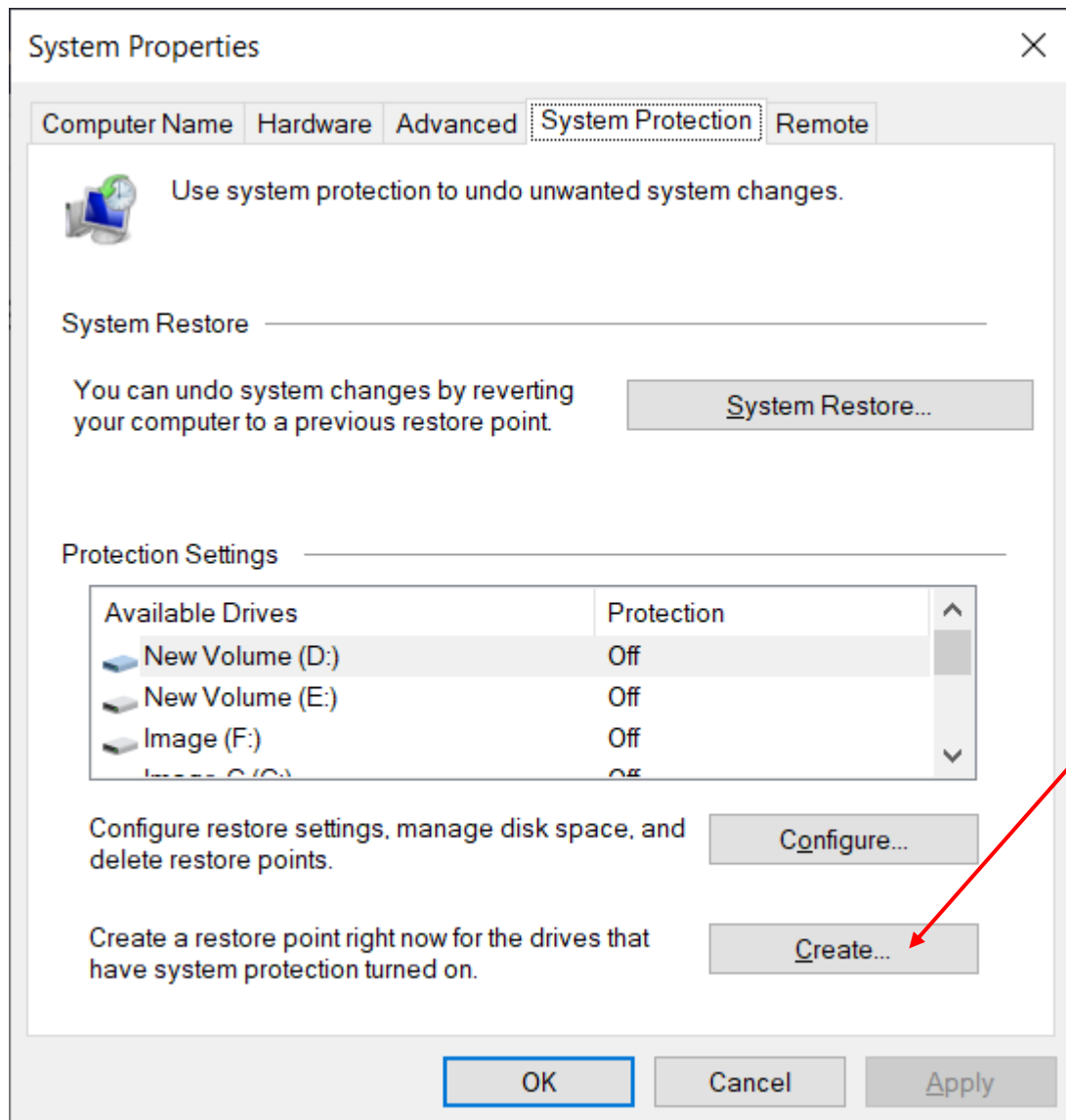


Creating a restore point in windows 10

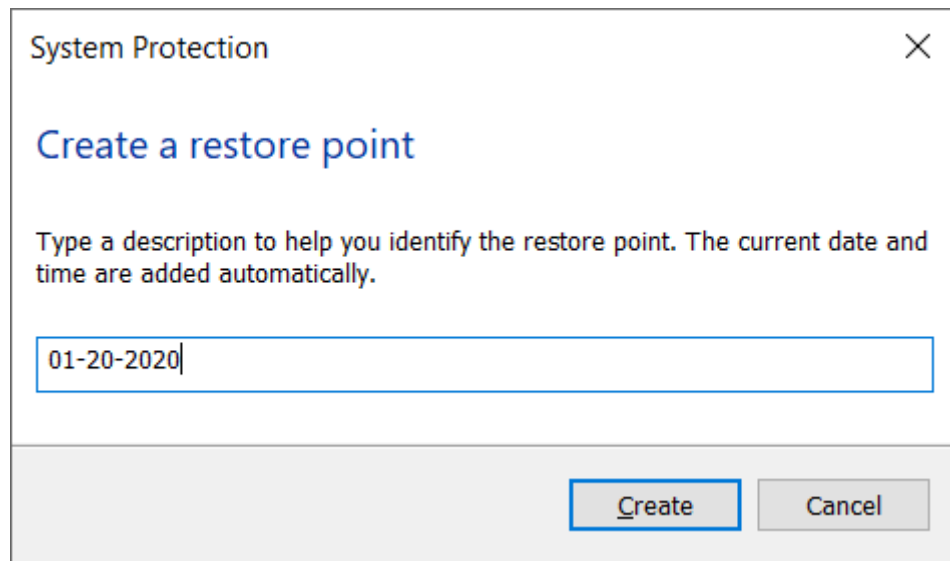
**Click on [START]
TYPE IN [RESTORE]
THEN SELECT: Create a restore point**



NOW CLICK ON [CREATE]



**I ALWAYS USE A DATE TO NAME A RESTORE POINT
ENTER THE DATE (NAME) THEN CLICK ON CREATE**



The image shows a Windows 'System Protection' dialog box with the title 'System Protection' and a close button (X) in the top right corner. The main heading is 'Create a restore point' in blue. Below it, a message states: 'Type a description to help you identify the restore point. The current date and time are added automatically.' There is a text input field containing '01-20-2020'. At the bottom right, there are two buttons: 'Create' (highlighted with a blue border) and 'Cancel'.

**THAT'S ALL THERE IS TO IT
DO THIS BEFORE YOU MAKE A MAJOR CHANGE ON
YOUR COMPUTER OR INSTALL NEW SOFTWARE THEN
YOU WILL ALWAYS HAVE A POINT TO FALL BACK ON**